

FACT SHEET: NYU EXPANSION **and PLAN 2031**

*prepared by the Greenwich Village Society for Historic Preservation
February, 2009*

NYU 2031 Plan:

- ▶ add 6 million sq. ft. of new space between now and 2031
- ▶ **between 3.6 and 2.8 million** of those 6 million sq. ft. would be in the “core and neighborhood” (*Village, East Village, NoHo and Union Square*)

3.6 million sq. ft. =

- ▶ More than 20 more of NYU’s 26-story, 700-bed ‘mega-dorm’ on East 12th Street, the tallest building in the East Village; *2.8 million sq. ft. is the equivalent of 16 more mega-dorms (see below), or*
- ▶ The equivalent of ALL new NYU buildings constructed in the same area over the previous 44 YEARS, 19 buildings; *2.8 million sq. ft. is roughly the equivalent of all new NYU buildings constructed in the same area over the previous 35 years, 15 buildings (see p.2);.*

Thus NYU is contemplating as much as DOUBLING its growth rate in our neighborhoods as compared to recent decades, which were already a time of EXPLOSIVE GROWTH by the University.

NYU's East 12th Street dorm:

26 stories

700 beds

tallest building in the East Village

175,000 sq. ft.

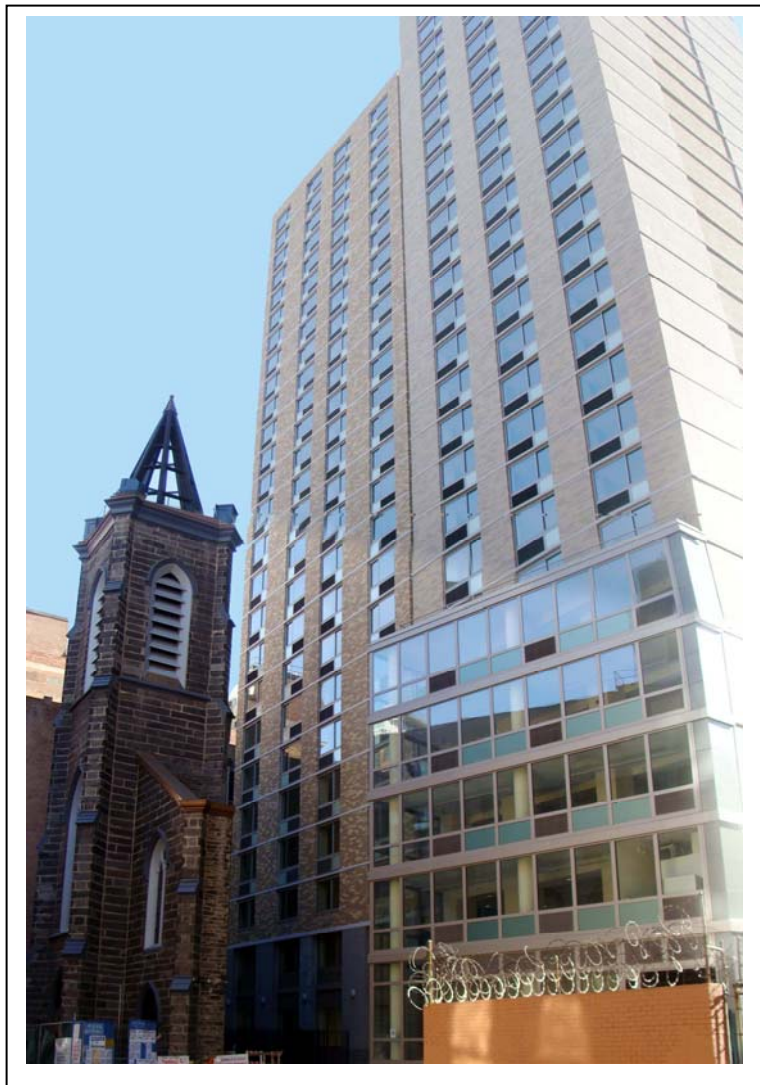
20 x 175,000 sq. ft.

= 3.5 mil. sq. ft.

16 x 175,000 sq. ft.

= 2.8 mil. sq. ft.

*This is the range of
NYU's contemplated growth
in the "core and neighborhood"
(the Village, East Village,
NoHo and Union Square)
over the next 22 years,
as per NYU 2031 Plan*



Total New NYU Development Village/East Village/NoHo/Union Square 1964-2008

173,540 sq. ft.



Furman Hall (2004)
79 West 3rd Street

210,500 sq. ft.



Kimmel Center (2003)
60 Washington Sq. So.

446,076 sq. ft.



Palladium Hall (2001)
140 East 14th Street

74,000 sq. ft.



2nd Street Dorm (2001)
1 East 2nd Street

87,321 sq. ft.



Coral Towers (2000)
129 Third Avenue

216,267 sq. ft.



University Hall (1999)
110 East 14th Street

100,000 sq. ft.



Kaufman (1999)
44 West 4th Street

238,204 sq. ft.



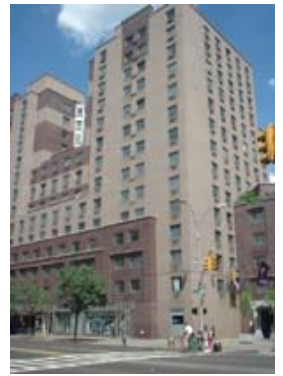
Carlyle Court (1987)
25 Union Sq. West

153,348 sq. ft.



D'Agostino Hall (1986)
110 West 3rd Street

337,600 sq. ft.



3rd Avenue No. (1986)
75 Third Avenue

146,583 sq. ft.



Alumni Hall (1985)
33 Third Avenue

307,312 sq. ft.



Mercer Street Residence (1981)
240 Mercer Street

41,000 sq. ft. (above ground)



Coles Gym (1981)
181 Mercer Street

425,400 sq. ft.



Bobst Library (1973)
70 Washington Sq. So.

113,940 sq. ft.



Tisch Hall (1972)
40 West 4th Street

10,000 sq. ft.



Kevorkian Center (1972)
50 Washington Square So.

54,725 sq. ft.



Meyer (1971)
4-6 Washington Place

426,000 sq. ft.



Silver Towers (2 bldgs.) (1964-7)
100 and 110 Bleecker Street

**TOTAL NYU development
1964-2008 (44 years):**

3.6 million sq. ft.

or

82,000 sq. ft./year

(1973 - 2008: 2.9 mil. sq. ft., or 83,000 sq. ft./year)

**TOTAL NYU development
in NYU 2031 Plan (just 22 years):**

2.8 to 3.6 million sq. ft.

or

127,000 to 164,000 sq. ft./year

--as much as twice the rate of prior decades